

OmegaPAT, BetaPAT

The most advanced Portable Appliance Testers



Wide application range

- Enables complete safety verification of a wide range of electrical appliances (**Class I, Class II** and **Class III** appliances).
- Ideally suited for periodical testing, electrical service interventions, and control testing.
- Supports **230 V** and **110 V**.

Autotest mode for easier and faster testing

- It offers a list of preprogrammed autotest sequences and the possibility to customize your own test procedure.
- Over **4000 Autotests** can be stored into the memory.
- Supports **RFID** and **Barcode labels** for super fast auto-testing.

High accuracy and safety

- The instrument meets or exceeds the demands of the latest safety and appliance testing standards.
- High accuracy and the highest protection of the user and tested appliance during test is guaranteed in all working conditions.

Easy operation

- High resolution **large graphic display** contains all important information when working with the tester.
- Customized **keypad with jogger** for fast access to all of the functions.
- All the test can be performed without external adapters.
- Fast direct print-out facilities for immediate printing.

PC Software package PAT Link.

- Perfect tool for documentation, analysis and printing out test reports.

Robust, waterproof case

- The new Metrel case offers **high protection** even if working in arduous conditions.
- All standard **accessories can fit inside** the case.

The complete analysis of safety:

	Omega	Beta
Visual test	✓	✓
Earth Bond Test	✓	✓
Insulation	✓	✓
Sub Leakage Current	✓	✓
Touch Leakage Current	✓	✓
Differential Leakage Current	✓	✓
Flash Test	✓	
Power Test	✓	✓
Polarity (cord) Test	✓	✓

Measurements and testing in accordance with:

IEC 60335-1	Household and similar electrical appliances
IEC 60598-1	Luminaries
IEC 60745	Hand-held motor operated tools
IEC 60950	Safety of information technology equipment
VDE 701 T1	Repair and modification inspections
VDE 702 T1	Repeat tests of electrical appliances

Standard set:

OmegaPAT	Order No. MI 2140
BetaPAT	Order No. MI 2141



- Instrument OmegaPAT
- Earth Bond Clip
- Flash Test Probe*
- Instruction Manual
- Production verification data
- Declaration of warranty
- Declaration of conformity
- PC Software PAT Link with RS 232 cable

* at Omega PAT MI 2140 only

Key Features



Selection of the appliance type.

Pre-programmed auto test sequences.

Help menus for individual tests.



Clear and easy access to test procedure:
 - select the auto test
 - press START

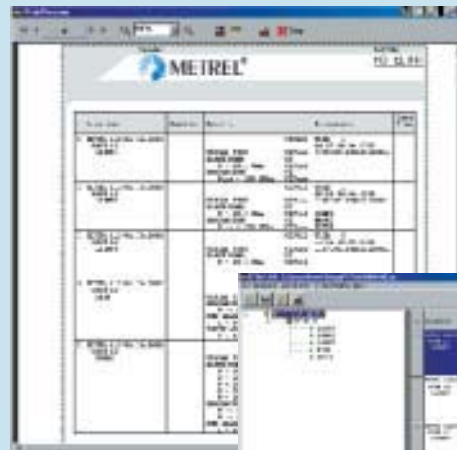


Multi - input / output ports:
 - Bar code reader
 - RFID reader / printer
 - Printer
 - PC

Professional PC SW package, printout facilities

The accompanying professional PC SW package PATLink enables:

- viewing and analysing measurement results,
 - storing of results for documentation,
 - operating of test reports,
 - printing of test reports.
- Also available PC SW package simply PATs which supports most common PAT testers



Printer facilities:
 - Fast print-outs of measurement results.
 - Printing of Barcode labels (in combination with PC SW)



Technical Specification

- Earth Bond**
 Test currents: 100 mA, 4 A, 10 A, 25 A
 Measuring range: 0.00 ÷ 19.9 Ω Accuracy: ±(5 % + 5 dig.)
- Insulation**
 Test voltage: 250 V, 500 V
 Measuring range: 0.000 ÷ 199.9 M Ω Accuracy: ±(5 % + 5 dig.)
- Substitute Leakage**
 Test voltage: 40 V
 Measuring range: 0.00 ÷ 1.99 mA Accuracy: ±(5 % + 5 dig.)
- Touch Leakage**
 Measuring range: 0.00 ÷ 19.99 mA Accuracy: ±(5 % + 5 dig.)
- Leakage**
 Measuring range: 0.00 ÷ 19.99 mA Accuracy: ±(5 % + 5 dig.)
- Power**
 Measuring range: 0 ÷ 4 kVA Accuracy: ±(5 % + 5 dig.)
- Flash Test***
 Output voltage: 1500 V / 3000 V
 Measuring range: 0.00 ÷ 2.50 mA Accuracy: ±(5 % + 5 dig.)
 Trip-out function: yes
- Polarity**
 Output voltage: 40 V
 Faults: Open, Short, Crossed, Multiple fault

Timer: All functions, 2 s ÷ 180 s

Limits: All functions, programmable

* Available only at OmegaPAT MI 2140

General Specification

- Mains voltage –230 V system 230 V (+6 % - 10 %) / 50 or 60 Hz
 Mains voltage –115V system 115 V (+6 % - 10 %) / 50 or 60 Hz
 Max. power consumption 150 VA (without load on TEST SOCKETS)
- Display Graphic, 240 X 128 dots
 RS232 interfaces Baud rate 115200
 Memories 4000 memory locations
- Shock proof plastic / portable case
 Dimensions (w x h x d) 335 x 160 x 335 mm
 Mass (without accessories) 9 kg
 Pollution degree 2
 Degree of protection (closed) IP 54
 Overvoltage category Cat II / 300 V
 Protection classification I
 Working temperature range - 10 ÷ + 50 °C
 Protection against overload on test sockets: yes
 Protection against shorted appliances or excessive leakages: yes
 Earthing connection detection: yes

Optional accessories



- | | |
|------------------------------|---------------|
| - Printer | A 1103 |
| - 110 / 230 V adapter | A 1104 |
| - Bar Code reader | A 1105 |
| - Bar Code Labels, 200 pcs | A 1106 |
| - RFID reader / writer * | A 1107 |
| - RFID tags, 50 pcs* | A 1108 |
| - OmegaPAT link | A 1109 |
| - PC SW package Simply PATs* | A 1110 |

Order No.:

* will follow later in 2003